

The background features a complex, abstract geometric pattern. It consists of multiple overlapping squares and rectangles, each filled with a different pattern of lines or dots. The patterns include vertical lines, horizontal lines, and a grid of small squares. The overall effect is a sense of depth and movement, with the shapes appearing to recede into the distance.

2014 ACSA
Administrators Conference
EXPANSE: Architecture
Education in an
Expanded Field
November 6-8, 2014
Philadelphia, PA

EXPANSE

The architectural discipline has, for centuries, operated under the regime of representation, adopting the devices and techniques of projection to imagine a world that has yet to be. The generative bias has been visual to date, using optics to construct a relationship with the world.

However, with the advent of emerging technologies, there are new possibilities that architecture itself, can perform, speak back, react and essentially become a protagonist, and not just operate as a visual backdrop. Smart cities, buildings, and devices are leading the way towards new forms of research, changing not only the forms of buildings, but their behavior and performance.

Within this context many different areas of research have developed, and in particular across disciplines, drawing in applications from biology to robotics, from material sciences to software, and from responsive technologies to manufacturing protocols. Environments are being impacted by the discovery of material properties at the nano-scale, while at the same time, global networks of data are helping to gauge the optimization of our use of resources.

If the architectural discipline, after modernism, has had the time to re-establish its own disciplinary roots and motivations, these new technologies prompt us to revisit other disciplinary models that might impact our thinking.

Learning from these other sciences and industries, architecture itself emerges as an intelligent living environment. The theme of the ACSA conference will focus on the ideas surrounding smart, responsive and sensible spaces. How does this theme lead to innovative thinking on future cities and architectures, and hence how do we lead the way in education?

CONFERENCE CO-CHAIRS

Winka Dubbeldam, PennDesign
Nader Tehrani, MIT

THURSDAY

9:00am
clover room

Community Colleges Workshop

Articulation agreements, transfer policies, and more

Andrew Vernooy Texas Tech

Randy Steiner cCCAP, Montgomery College

12:00pm
clover room

Lunch

1:00pm
clover room

New Programs Workshop

An opportunity to share experiences developing new degree programs

3:00pm
clover room

NCARB Discussions

Many Ways Through an Integrated Path to Licensure

Dennis Ward NCARB First VP/President-Elect

Michael J. Armstrong NCARB CEO

Stephen Nutt NCARB Senior Architect & Advisor to CEO

6:00pm
@ Penn*

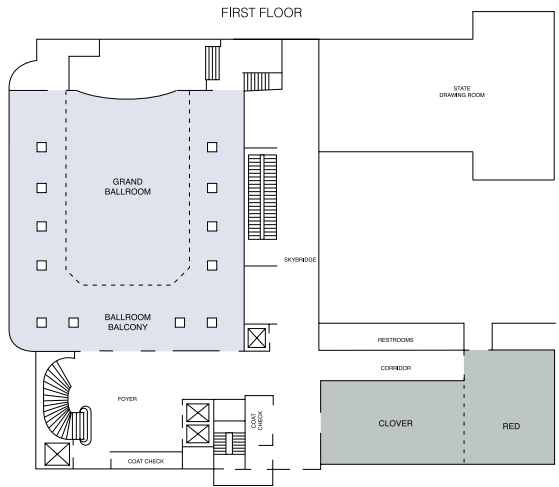
Opening Keynote: Hashim Sarkis MIT

* Meyerson Hall (34th & Walnut) Directions on the back of this program

7:00pm
@ Penn*

Reception

HOTEL MAP



FRIDAY

9:00am
ballroom

EXPANSE: Smart Cities

Winka Dubbeldam, PennDesign & Nader Tehrani, MIT
Mitchell Joachim NYU, Terreform ONE
Robert Gerard Pietrusko Harvard

9:00am
clover room

NAAB 101

11:00am
ballroom

EXPANSE: Smart Buildings

Winka Dubbeldam, PennDesign
Rodolphe el-Khoury U of Miami
David Benjamin Columbia
Peter Testa SCI-Arc

11:00am
red room

ARCC Meeting

12:30pm
ballroom

ACSA Lunch *Accreditation funding, AIA sustainability initiatives, NCARB grant winners and more*

2:00pm
ballroom

EXPANSE: Smart Components

Nader Tehrani, MIT
Skylar Tibbits MIT
Anna Dyson RPI
Simon Kim PennDesign

2:00pm
clover room

NAAB Team Room Preparation

4:00pm
ballroom

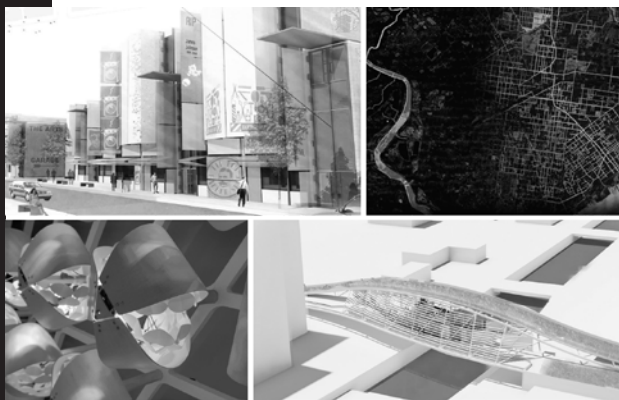
EXPANSE: Smart Environments/Synthesis

Evan Douglis RPI + EXPANSE panelists and moderators

5:30pm
conservatory
12th floor

Caucuses Reception

Discussions with your ACSA regional directors and colleagues



PHILADELPHIA UNIVERSITY'S
COLLEGE of ARCHITECTURE and the BUILT ENVIRONMENT

With a diverse set of undergraduate and graduate programs, PhilaU offers students an unparalleled educational experience.

- Bachelor of Architecture
- B.S. in Architectural Studies
- B.S. in Construction Management
- B.S. in Interior Design
- Bachelor of Landscape Architecture
- Master of Architecture
- M.S. in Architecture
- M.S. in Construction Management
- M.S. in GeoDesign
- M.S. in Interior Architecture
- M.S. in Sustainable Design

➔ Visit our website to learn more about our College:
www.PhilaU.edu/architectureandthebuiltenvironment

SUSTAINABILITY | COLLABORATION | INNOVATION



SATURDAY

8:00am
ballroom

NAAB Breakfast

Review of New Conditions for Accreditation

9:30am
ballroom

Workshop Keynote: James Barker

*Clemson
Jori Erdman, LSU*

11:00am
ballroom

Workshop A: Expanded Curriculum Initiatives

Paola Sanguinetti, U of Kansas

Jori Erdman LSU
Jim Doerfler Philadelphia U
Lori Ryker Artemis Institute

11:00am
clover room

Workshop B: Students Success & Retention

Darius Sollohub NJIT
Tony Abbate Florida Atlantic U
Scott Ruff Tulane

12:30pm
ballroom

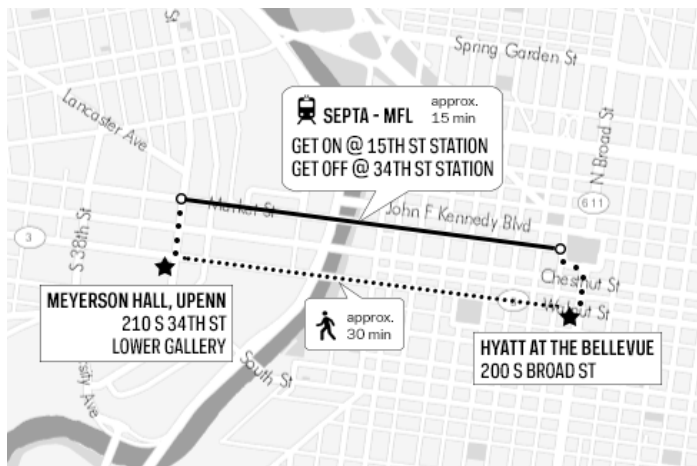
Workshop Lunch: Sponsored Studios & Industry Partnerships

Jori Erdman, LSU
Mo Zell Wisconsin-Milwaukee
Steve White Roger Williams

2:00pm
clover room

NAAB Team Training

DIRECTIONS TO PENN FOR THURSDAY EVENING



@ACSAUpdate #ACSAexpense



facebook.com/ACSANational



ACSA-arch.org/LinkedIn



pinterest.com/ACSAPrograms



instagram.com/ACSANational