



# **SUBTROPICAL CITIES 2013**

**2013 ACSA FALL CONFERENCE**

**DESIGN INTERVENTIONS FOR CHANGING CLIMATES**

**PROGRAM BOOK**

## TABLE OF CONTENTS

|                                |    |
|--------------------------------|----|
| About the Conference           | 3  |
| Sponsors + General Information | 4  |
| About ACSA                     | 5  |
| Schedule at-a-Glance           | 7  |
| Thursday, October 17, 2013     | 8  |
| Friday, October 18, 2013       | 9  |
| Saturday, October 19, 2013     | 13 |
| Event Floorplans + Map         | 18 |

### IMPORTANT ADDRESSES

**Primary Conference Location/Venue:**

**Florida Atlantic University**

Broward College Higher Education Complex

111 East Las Olas Boulevard

Fort Lauderdale, Florida 33301

**(Majority of conference including sessions on the 9th floor)**

**Lodging:**

**Riverside Hotel**

620 East Las Olas Boulevard

Fort Lauderdale, FL 33301

**Thursday & Friday Evening Keynote/Plenary:**

**First Baptist Church of Fort Lauderdale**

301 East Broward Boulevard

Fort Lauderdale, FL 33301

**Project Exhibitoin & Opening Reception:**

**Askew Tower/MetroLAB**

111 East Las Olas Boulevard

Fort Lauderdale, FL 33301

**Saturday Evening Keynote/Plenary:**

**Museum of Discovery & Science**

401 Southwest 2nd Street

Fort Lauderdale, FL 33312

**BRAVING A NEW WORLD:  
DESIGN INTERVENTIONS FOR CHANGING CLIMATES**

Catastrophic weather events – including drought and flooding, fires and deforestation, hurricanes, and landslides - have recently affected major centers of population throughout the world’s subtropical climate zones. In coming decades, the world’s population faces the compounding problems of sea level rise and resource depletion, and the impacts of climate-related disruptions on the flow of people and resources, particularly, sustainable food supply. With the forces of climate change now acting upon us, the subtropical urban regions of the world are becoming the harbinger for “*Braving a New World*”, as the power of local knowledge and focused research is tested against global influences and our everyday engagements and actions reflect our position about the future we are designing for ourselves and for our future generations.

So how do the built environment design professions respond and intervene in the way the community engages with the complex problems of design of urban settlements generally, and public spaces and buildings particularly, for more powerful weather systems?

- What paradigm shifts in design philosophy in practice and education are needed to design for a world that is likely to be 2-4 degrees warmer?
- Is there a role in cultural knowledge and the place/identity agenda in design more for extremes and less for averages?
- What do designers need to know in order to design for increased capacity to produce and store renewable energy or finite resources (water)?
- How do we collaborate and with whom to design for shelter to provide greater protection for inhabitants and for their property without further exacerbating anthropomorphic climate change?
- Why not design for centrality of urban hydrology and ecology?
- How do we incorporate theoretical principles of adaptability to the changing climate and social environment, particularly in regard to urban settlements and food security?
- How do we design for increasing population in our subtropical urban centers over the next 40 years to ensure a good quality of life and responsiveness to climate change?

**CO-CHAIRS**

Anthony Abbate, Florida Atlantic University  
Francis Lyn, Florida Atlantic University  
Rosemary Kennedy, Queensland University of Technology

**SPONSORS**

The Association of Collegiate Schools of Architecture is grateful for the support and assistance of:



**Queensland University of Technology**  
Brisbane Australia

**GENERAL INFORMATION**

**Continuing Education**

Selected CES sessions will be available. CES forms are located in your registration packet. CES forms must be signed and turned in at the registration desk before leaving the conference.

**Badges**

You must wear your badge throughout the conference to be admitted into sessions. Please return your badge cover at the close of the meeting to the registration desk for recycling.

**Online Evaluation Form**

You will be sent a link to complete an online evaluation survey after the conference. Your opinions and program suggestions will help us plan for future conferences. Please take a few minutes to complete the survey. We greatly appreciate your feedback.

**2013 - 2014 BOARD OF DIRECTORS**

**PRESIDENT**

Norman Millar, Woodbury University

**VICE PRESIDENT/PRESIDENT-ELECT**

Hsin-Ming Fung, Southern California Institute of Architecture

**PAST PRESIDENT**

Donna V. Robertson, Illinois Institute of Technology

**TREASURER**

Jori Erdman, Louisiana State University

**SECRETARY**

Lisa Tilder, Ohio State University

**EAST CENTRAL DIRECTOR**

Mo Zell, University of Wisconsin-Milwaukee

**NORTHEAST DIRECTOR**

Glenn Wiggins, Wentworth Institute of Technology

**MID-ATLANTIC DIRECTOR**

David W. Hinson, Auburn University

**GULF DIRECTOR**

Corey Saft, University of Louisiana - Lafayette

**WEST DIRECTOR**

Ryan Smith, University of Utah

**WEST CENTRAL DIRECTOR**

Shannon Criss, University of Kansas

**CANADIAN DIRECTOR**

Leslie Van Duzer, University of British Columbia

**STUDENT DIRECTOR**

Jennifer Taylor, American Institute of Architecture Students

**PUBLIC DIRECTOR**

Andrew L. Dannenberg, University of Washington,  
School of Public Health

**EXECUTIVE DIRECTOR**

Michael J. Monti, Association of Collegiate Schools of Architecture

**ACSA STAFF**

Michael J. Monti, Executive Director  
Eric Ellis, Director of Operations and Programs  
Pascale Vonier, Director of Communications and Media Strategies  
Lian Chang, Director of Research and Information  
Kevin Mitchell, Editorial Production Coordinator  
Angela DeGeorge, Programs Coordinator  
Danielle Washington, Membership Manager

**ACSA MISSION STATEMENT**

To advance architectural education through support of member schools, their faculty, and students. This support involves:

- Serving by encouraging dialogue among the diverse areas of discipline
- Facilitating teaching, research, scholarly and creative works, through intra/interdisciplinary activity;
- Articulating the critical issues forming the context of architectural education
- Fostering public awareness of architectural education and issues of importance

This advancement shall be implemented through five primary means: advocacy, annual program activities, liaison with collateral organizations, dissemination of information and response to the needs of member schools in order to enhance the quality of life in a global society.



**THURSDAY, OCTOBER 17TH, 2013**

|              |                                 |   |
|--------------|---------------------------------|---|
| <b>12:00</b> | Exhibition Display              | MetroLAB                                |
| <b>6:30</b>  | Opening Keynote: David Waggoner | FIRST BAPTIST CHURCH - THE EVENT CENTER |
| <b>7:30</b>  | Opening Reception               | MetroLAB                                |

**FRIDAY, OCTOBER 18TH, 2013**

|              |                                      |                                  |
|--------------|--------------------------------------|----------------------------------|
| <b>8:00</b>  | Exhibition Display                   | MetroLAB                         |
| <b>8:30</b>  | Rising Currents                      | HEC 910                          |
| <b>8:30</b>  | Vernacular Traditions                | HEC 911                          |
| <b>8:30</b>  | Tools for Adaptive Designs           | HEC 914                          |
| <b>10:00</b> | Coffee Break                         | FAU - 9TH FLOOR                  |
| <b>10:30</b> | Coping with (Climate) Change         | HEC 910                          |
| <b>10:30</b> | Toward a Net Zero                    | HEC 911                          |
| <b>12:00</b> | Lunch Break                          |                                  |
| <b>2:00</b>  | Sustaining Culture                   | HEC 910                          |
| <b>2:00</b>  | Material Understanding               | HEC 911                          |
| <b>2:00</b>  | Complexities of Adaptation           | HEC 914                          |
| <b>3:30</b>  | Coffee Break                         | FAU - 9TH FLOOR                  |
| <b>4:00</b>  | Subtropical City                     | HEC 910                          |
| <b>4:00</b>  | Learning from the Past               | HEC 911                          |
| <b>4:00</b>  | Coastal Currents                     | HEC 914                          |
| <b>6:00</b>  | “Shored Up” Plenary: Movie Screening | BAPTIST CHURCH - VELOCITY CENTER |

**SATURDAY, OCTOBER 19TH, 2013**

|              |  |                                       |
|--------------|--|---------------------------------------|
| <b>8:00</b>  | Tree Giveaway  | BROWARD COLLEGE                       |
| <b>8:00</b>  | Exhibition Display   | MetroLAB                              |
| <b>8:00</b>  | Beyond the Horizon: Design Workshop  | HEC BOARD OF TRUSTEES ROOM-11TH FLOOR |
| <b>8:30</b>  | Natural and Artificial   | HEC 910                               |
| <b>8:30</b>  | Recycling Waste  | HEC 911                               |
| <b>8:30</b>  | Metrics and Rating Systems   | HEC 914                               |
| <b>10:00</b> | Coffee Break   | FAU - 9TH FLOOR                       |
| <b>10:30</b> | Form Follows Performance   | HEC 910                               |
| <b>10:30</b> | Designing from Disaster  | HEC 911                               |
| <b>10:30</b> | High Tide on Main Street<br>The Benefits of Urban Trees is a Subtropical Clime | HEC 914                               |
| <b>12:00</b> | Lunch Break  |                                       |
| <b>2:00</b>  | Students & Communities Engage  | HEC 910                               |
| <b>2:00</b>  | Weather & Atmosphere   | HEC 911                               |
| <b>2:00</b>  | Places & Landscapes  | HEC 914                               |
| <b>5:15</b>  | Closing Keynote: Tony Fry  | MUSEUM OF DISCOVERY & SCIENCE         |
| <b>6:30</b>  | Closing Plenary  | MUSEUM OF DISCOVERY & SCIENCE         |
| <b>7:30</b>  | Closing Reception  | MUSEUM OF DISCOVERY & SCIENCE         |

**12:00PM-6:00PM REGISTRATION**

ASKEW TOWER /  
MetroLAB

**12:00PM-6:00PM EXHIBITION DISPLAY**

MetroLAB

**6:30PM-7:30PM OPENING KEYNOTE**

FIRST BAPTIST  
CHURCH - THE  
EVENT CENTER

David Waggoner



David Waggoner is the president of Waggoner & Ball, an award-winning, internationally active architectural design and planning practice located in New Orleans, Louisiana. He is also the initiator of Dutch Dialogues, an intercultural, interdisciplinary and intergenerational exchange between Dutch engineering and design professionals and their American counterparts focused on water-based urban design. The Dutch Dialogues conferences in the years after Hurricane Katrina articulated a new vision of New Orleans as a city living with – rather than against – water.

Building on the Dutch Dialogues, David leads a team of local and international experts in the development of the Greater New Orleans Urban Water Plan. The regional strategy addresses sustainable storm water management at all scales, from drainage system networks to individual lots, and includes ideas for supplemental green infrastructure systems based on hydrologic characteristics of the landscape. The team's ultimate goal is to develop a model of sustainable delta urbanism that embraces water to improve safety, resiliency and quality of life, as well as create new economic and development opportunities.

**7:30PM-8:30PM OPENING RECEPTION**

MetroLAB



**8:00AM-5:30PM**    **REGISTRATION**  
FAU/BC            Higher Education Complex - 9th floor

**8:00AM-6:00PM**    **EXHIBITION DISPLAY**  
MetroLAB

**8:30AM-10:00AM**    **RISING CURRENTS**  
HEC 910            *Presentation Session*  
*Moderator:* Jori Erdman, Louisiana State University

**Communicating Sea Level Rise Risk with a Coastal Vulnerability Index**  
Keren Bolter, Florida Atlantic University

**City of Water: Architecture, Infrastructure and the Floods of Phnom Penh**  
Shelby Elizabeth Doyle, Louisiana State University

**Raised Structures: Reclaiming the Interstitial as a Means of Acclimatization**  
Alice C. Guess, Independent Scholar

**Projecting Retreat and Rebuilding: Sea Level Rise and Climate Smart Design for Southern Florida's Future Built Environments**  
John Sandell, Florida Atlantic University

**Between Land and Water: Sustainably Inhabiting the Changing Landscape of Deltaic Plains, A Case Study for Southeastern Louisiana\***  
William Joseph Doran, Louisiana State University

**8:30AM-10:00AM**    **VERNACULAR TRADITIONS**  
HEC 911            *Presentation Session*  
*Moderator:* Thomas Colbert, University of Houston

**Vernacular Architecture and Climate Change**  
Vandana Baweja, University of Florida

**Bioclimatic Design in Casablanca: Decision Support through Building Performance Simulation**  
Shady Galal Attia, Swiss Federal Institute of Technology  
Goefrey van Moeseke, Université catholique de Louvain

**Exploring Vernacular East African Architecture: Lessons for the Modern World**  
Aimee P.C. Buccellato, University of Notre Dame  
Megan Elizabeth Reineccius, University of Notre Dame

**Fieldwork Tahiti: Houses of Flux**  
Ingaliill Wahlroos-Ritter, Woodbury University

**8:30AM-10:00AM**    **TOOLS FOR ADAPTIVE DESIGNS**  
HEC 914            *Presentation Session*  
*Moderator:* Samia Rab, American University of Sharjah

**Building Simulation Strategies to Push Design Thinking**  
David R. Beach, Drury University

**Evolutionary Computing and the Potential for Urban Resilience**  
Pasquale De Paola, Louisiana Tech University

**The Unflat Pavilion: Responsive Materialism + Adaptive Fabrication**  
Nick Gelpi, Florida International University

**Combining Old and New Tools for Visualizing Environmental Factors**  
John McDermott, University of Texas at Arlington  
Taner R. Ozdil, University of Texas at Arlington  
Mitch Stepanovich, University of Texas at Arlington

**Materials Investigations\***  
Donna Kacmar, University of Houston

**10:00AM-10:30AM COFFEE BREAK**

FAU - 9TH FLOOR

**10:30AM-12:00PM COPING WITH (CLIMATE) CHANGE**

HEC 910

*Presentation Session*

*Moderator:* John McDermott & Mitch Stepanovich,  
University of Texas at Arlington

**Posthumanizing Sustainability**

Pasquale De Paola, Louisiana Tech University  
William T. Willoughby, Kent State University

**Sustainability Art: Architecture, Aesthetics, and Encounters with Climate Change**

William T. Willoughby, Kent State University

**Mythic Operations**

Katherine C. Harvey, Woodbury University

**The Sun Will Shine More Brightly Everywhere**

George Thomas Kapelos, Ryerson University

**10:30AM-12:00PM TOWARD A NET ZERO**

HEC 911

*Presentation Session*

*Moderator:* Keith Van der Riet, Florida Atlantic University

**Mitigate, Adapt, Sustain: Emerging Workflows and Design Protocols for Carbon Neutral Subtropical H2 Cities**

Thomas Spiegelhalter, Florida International University

**Does PassiveHouse have a Home in the Deep South?**

Corey Saft, University of Louisiana - Lafayette

**Strategic Decision Making for Zero Energy Buildings In Jordan**

Shady Galal Attia, Swiss Federal Institute of Technology

**12:00PM-2:00PM LUNCH**

Lunch on your own

**2:00PM-3:30PM SUSTAINING CULTURE**

HEC 910

*Presentation Session*

*Moderator:* James Gall, Queensland University of Technology

**Post-Vernacular "Geography" Network: A Tool to Build and Rebuild Sustainable Cities in Latin America**

Diana Maldonado, Universidad Autónoma de Nuevo León, Mexico

**Tracing the Urban Informal: Mutual Self-help to ExNihilo**

Sarosh Anklesaria, Syracuse University

**The Path to a Better Integration: Idaho Refugee's Resettlement Housing Preference**

Xiao Hu, University of Idaho

**Kennedy Homes, Affordable Housing \_A New Paradigm\***

Margi Glavovic Nothard, Glavovic Studio

**Camino Nueva Vida\***

David R. Beach, Drury University  
Sam McBride, Drury University

2:00PM-3:30PM

HEC 911

**MATERIAL UNDERSTANDING**

*Presentation Session*

*Moderator:* Francis Lyn, Florida Atlantic University

**Materials Research**

Donna Kacmar, University of Houston

**Laminated Bamboo Structures for a Changing World**

Hollee Hitchcock Becker, Catholic University of America

**Returning to Earth: Analyzing and Designing Earthen Structures for Sustainable Design**

Daniel Butko, University of Oklahoma  
Kianoosh Hatami, University of Oklahoma  
Lisa Holliday, University of Oklahoma  
Matthew Reyes, University of Oklahoma  
Chris Ramseyer, University of Oklahoma

**Mocking The Museum:**

**Compelling Evidence of Premeditation**

Nick Gelpi, Florida International University

**Bambooklet: A Guide to Bamboo\***

Marta Anna Nowak, AN.ONYMOUS  
Iman Ansari, AN.ONYMOUS

2:00PM-3:30PM

HEC 914

**COMPLEXITIES OF ADAPTATION**

*Presentation Session*

*Moderator:* Hassan Khan, Roger Williams University

**Plantation Geography to Global City: Density in Barbados**

Clifton Fordham, Temple University

**Jakarta: Design Research and Hypercomplexity**

Meredith L. Miller, University of Michigan  
Etienne Turpin (Research Partner)  
Adam Bobbette (Research Partner)

**Coastal Community Resilience Studio:  
Trans-disciplinary Collaboration to Solve  
Trans-Disciplinary Problems**

Whitney Broussard, University of Louisiana - Lafayette  
JoAnne DeRouen, University of Louisiana - Lafayette  
Michael McClure, University of Louisiana - Lafayette  
Thomas C. Michot, University of Louisiana - Lafayette  
Kari Jasmine Smith, University of Louisiana - Lafayette

3:30PM-4:00PM

FAU-9TH FLOOR

**COFFEE BREAK**

4:00PM-5:30PM

HEC 910

**SUBTROPICAL CITY**

*Presentation Session*

*Moderator:* Rosemary Kennedy, Queensland University of Technology

**Restructuring a global identity: Branding Shanghai by “De-politicization” & “Windowism”**

Xiao Hu, University of Idaho

**Miami-Singapore: Establishing a High-Rise Dialogue Between Unlikely Tropical Sisters**

Eric Firley, University of Miami  
Philippe Honnorat, University of Miami

**Godzilla vs. Mechagodzilla: Radical Urban Structures Past and Future**

Damon Caldwell, Louisiana Tech University

4:00PM-5:30PM

HEC 911

**LEARNING FROM THE PAST**

*Presentation Session*

*Moderator:* William Tilson, University of Florida

**Encountering Ecological, Urban Solutions for the Future: Mexica Urban Fabric**

Matthew Teti, North Carolina State University

**Plenums: Eero Saarinen and the Civic Quality of Air**

Kevin Moore, Auburn University

Robert Sproull Jr., Auburn University

**At Home in the Subtropics: Richard Neutra and the Hispanic Patio**

Brett Tippey, Kent State University

**Skin Treatment: subcutaneous and superficial enhancements to a legacy curtain wall\***

Gabriel Kroiz, Morgan State University

Pavlina Ilieva Morgan State University

4:00PM-5:30PM

HEC 914

**COASTAL CURRENTS**

*Presentation Session*

*Moderator:* Anthony Abbate, Florida Atlantic University

**Non-Structural vs. Structural: Strategizing Long-Duration Coastal Protection**

Meredith Sattler, Louisiana State University

**Designs for Coastal Security: Structural and Non-Structural Protection for the Houston-Galveston Region**

Thomas Colbert, University of Houston

**[IN]Flux Territories and Passive Structures: Lessons from Designing for Sea-Level Change in Maryland**

Luis Diego Quiros, University of Maryland

**Miami 2100: Envisioning our Second Century**

Marta Canaves, Florida International University

Marilys R. Nepomechie, Florida International University

6:00PM-7:30PM

BAPTIST CHURCH-  
VELOCITY CENTER

**SHORED UP**

*Plenary: Movie Screening*

Ben Kalina, *Director, Producer*

“Shored Up” is a documentary that asks tough questions about our coastal communities and our relationship to the land. What will a rising sea do to our homes, our businesses, and the survival of our communities? Can we afford to pile enough sand on our shores to keep the ocean at bay? In Long Beach Island, New Jersey and the Outer Banks of North Carolina, surfers, politicians, scientists and residents are racing to answer these questions. Beach engineering has been our only approach so far, but is there something else out there to be explored? Our development of the coastlines put us in a tough predicament, and it’s time to start looking for solutions.

**8:00AM-5:30PM**    **REGISTRATION**  
FAU/BC            Higher Education Complex - 9th floor

**8:00AM-1:00PM**    **TREE GIVEAWAY**  
BROWARD COLLEGE

**8:00AM-6:00PM**    **EXHIBITION DISPLAY**  
MetroLAB

**8:00AM-4:30PM**    **BEYOND THE HORIZON**  
HEC BOARD OF TRUSTEES ROOM – 11TH FLOOR

*Design Workshop*

**CLIMATE CHANGE CULTURE DESIGN**

**Context: Global and Local**

**Futuring Florida: Scenarios and Visions**

**Transformative Practice: Global Network**

Tony Fry, Queensland College of Art & Griffith University

Jim Gall, Queensland University of Technology

The aim of this workshop is to: (a) gain a better understanding of the threat posed by sea level rises in general and in a local context; (b) to grasp what needs to be planned and designed; (c) to establish an appropriate design process that operates in both space and time; and (d) explore an more detailed design agenda. The key to the approach is to place architectural design in a larger frame of research and design.

Participants will be invited thinkers and practitioners. Observers who will be asked to provide input + commentary.

**8:30AM-10:00AM**    **NATURAL AND ARTIFICIAL**  
HEC 910

*Presentation Session*

*Moderator:* Katherine Harvey, Woodbury University

**Birds of Lincoln Road**

Gray Read, Florida International University

**Soil and Surface – A Place of Inhabitation through Reclamation**

Sean Burkholder, Kent State University

Bradford Watson, Montana State University

**Delta Ranch – A Model for Resilient Housing on a Deltaic Coast**

Jori A. Erdman, Louisiana State University

Steven Hall, Louisiana State University

Carrie Knott, Louisiana State University

James Sullivan, Louisiana State University

**Edge Conditions and the Centrality of Architecture:**

**Emerging Technologies, Multi-Disciplinarity and Design**

**Responses to Challenges Facing the Texas – Louisiana**

**Gulf Coast**

Jeff Carney, Louisiana State University

Thomas Colbert, University of Houston

**Learning from Environmental Energies and Building Form in the Gulf Region\***

Joe Colistra, University of Kansas

Nilou Vakil, University of Kansas

**8:30AM-10:00AM RECYCLING/WASTE**

HEC 911

*Presentation Session*

*Moderator:* Marilyns Nepomechie, Florida International University

**Coupling Ecological Productivity with Anthropocentric Waste Streams to Regenerate Coastlines**

Keith Van de Riet, Florida Atlantic University

**Trash Tectonics: Experimentations in the Transformation of Waste**

Seth McDowell, University of Virginia

**Dirt, Garbage, Water, and Steel: Architectural Entrepreneurship in South Africa**

Nathan L. Richardson, Oklahoma State University

**Mining Landscapes of Waste: Finding Imaginative Potential in Discarded or Salvaged Materials\***

Daniel Butko, University of Oklahoma

**8:30AM-10:00AM METRICS AND RATING SYSTEMS**

HEC 914

*Presentation Session*

*Moderator:* Ingaliill Wahlroos-Ritter, Woodbury University

**Engaging a Critical Metric: New Strategies in Energy Literacy**

Thomas Bradley Deal, Louisiana Tech University

**Leed Green and Mean: Security versus Sustainability**

Randy Atlas, Florida Atlantic University

**On Tightness and Looseness**

Bradley Walters, University of Florida

**The Usability of Green Building Rating Systems in Hot Arid Climates: A Case Study in Siwa, Egypt**

Shady Galal Attia, Swiss Federal Institute of Technology  
Marwa Dabaieh, Lund University, Sweden

**10:00AM-10:30AM COFFEE BREAK**

FAU – 9TH FLOOR

**10:30AM-12:00PM FORM FOLLOWS PERFORMANCE**

HEC 910

*Presentation Session*

*Moderator:* Ming Hu, Catholic University of America

**Architecturally-Integrated Reverse Electrodialysis [RED]**

Demetrios Comodromos, Rensselaer Polytechnic Institute  
Anna Dyson, Rensselaer Polytechnic Institute  
Christina Lynn Puerto, Rensselaer Polytechnic Institute  
Jason Vollen, Rensselaer Polytechnic Institute

**Distributed Subtropical Coastline Emergency Energy: Generation Using Building Integrated Wind Technology**

Anna Dyson, Rensselaer Polytechnic Institute  
David Menicovich, Rensselaer Polytechnic Institute  
Ajith Rao, Rensselaer Polytechnic Institute  
Jason Vollen, Rensselaer Polytechnic Institute  
Nina M. Wilson, Rensselaer Polytechnic Institute

**Thermo-regulating Future City Envelopes with Multivalent Surfaces**

Anna Dyson, Rensselaer Polytechnic Institute  
Jason Vollen, Rensselaer Polytechnic Institute  
Kelly Winn, Rensselaer Polytechnic Institute

**Embedded Hydrologies – Combatting Water Scarcity through Local Water Capture\***

Miriam Ho, University of Waterloo

**10:30AM-12:00PM DESIGNING FROM DISASTER**

HEC 911

*Presentation Session*

*Moderator: Jeff Carney, Louisiana State University*

**Visions of a Subtropical City: Simultaneous Urban Paradigms for New Orleans**

Scott Bernhard, Tulane University

**Lessons from Leogane – Case Studies from Haiti**

Mark Stephen Taylor, University of Illinois at Urbana-Champaign

**Strong Winds and Rising Currents: A Design Proposal for the Grand Bahama International Airport**

Serge Ambrose, University of Houston

Michelangelo Sabatino, University of Houston

**Surge City**

Simon Atkinson, University of Texas at Austin

Charlton Lewis, University of Texas at Austin

**10:30AM-12:00PM SPECIAL FOCUS SESSION**

HEC 914

10:30AM **High Tide on Main Street**

John Englander

11:15AM **The Benefits of Urban Trees in a Subtropical Clime**

Daniel Suman, Rosenstiel School of Marine and Atmospheric Science

**12:00PM-2:00PM LUNCH ON YOUR OWN**

**2:00PM-3:30PM STUDENTS & COMMUNITIES ENGAGE**

HEC 910

*Presentation Session*

*Moderator: Rocco Ceo III, University of Miami*

**Emilio Sanchez in Cuba: Mid-Century Modernism and the Search for Cultural Identity**

Victor Deupi, New York Institute of Technology

**The Lal Dawarza Bath House: Public Space and Water Conservation in Historic Ahmedabad**

Nicholas Roberts, Woodbury University

*Nick Roberts AIA, Woodbury University Professor of Architecture passed away suddenly on September 21 due to complications from ALS (Lou Gehrig's disease), for which he was diagnosed in May. Teacher, mentor, and colleague, Nick was a leader in the expansion of Woodbury's extensive study abroad program and during his last semester he acted as interim chair.*

**Subtropical Futures: Victoria Park Re-imagined**

Peter Richards, Queensland University of Technology

**(RE) Covering Shelter: Enhancing Structural Design Pedagogy by Designing for Disaster Relief**

Rob Whitehead, Iowa State University

**Geometric Flood Control System (GFCS)\***

Wendy W. Fok, University of Houston

Megan Hartensteiner, University of Houston

2:00PM-3:30PM  
HEC 911

**WEATHER & ATMOSPHERE**

*Presentation Session*

*Moderator:* Eric Firley, University of Miami

**The New Subtropical Cities**

Hollee Hitchcock Becker, Catholic University of America

**Facade Design for Super High-rise Building in Subtropic Region in China**

Ming Hu, Catholic University of America

**Next-Generation Sustainable Architecture: Buildings as Air pollution Remediators**

John T. Fox, Lehigh University  
Nik Nikolov, Lehigh University

**Farming Freeway Corridors**

Carey Clouse, University of Massachusetts, Amherst

**The urbaRn Project; We Are What We Grow\***

Timothy Gray, Ball State University

2:00PM-3:30PM  
HEC 914

**PLACES & LANDSCAPES**

*Presentation Session*

*Moderator:* George Kapelos, Ryerson University

**Place Talking: A New Possibility for Preserving Sites of Cultural Significance**

Alice C. Guess, Independent Scholar

**Landscape Architecture without Landscape Architects: Exploring CHANS in the Sacred Shadow Conservation Network**

Julia N. Watson, Rensselaer Polytechnic Institute

**The Garden, Elevated\***

Elizabeth Grant, Virginia Tech  
Tess Thompson, Virginia Tech

5:15PM-6:15PM  
MUSEUM OF DISCOVERY & SCIENCE

**CLOSING KEYNOTE**

Tony Fry, Queensland College of Art & Griffith University



An Agenda of Transformation: Tony will argue that the extant politics, philosophy and practices of design cannot get us to a ‘future with a future’, and that in this unfolding age of global unsettlement they have to be remade. Framed by this situation, the question becomes: what do designer and architects do when confronted with the ‘defuturing’ consequences of humanity’s anthropocentric fabrication of ‘a world within the world’? Rather than deal with this question in the abstract it be will be first brought to ‘thinking the future of cities in time, unsettlement and a changing climate. Thereafter, issues of the transformation of learning, methods and practice will be presented both in the context of questions raised and as contribution to on going discussion within the conference.

6:30PM-7:30PM  
MUSEUM OF DISCOVERY & SCIENCE

**CLOSING PLENARY**

*Moderators:* Anthony Abbate, Florida Atlantic University  
Rosemary Kennedy, Queensland University of Technology

7:30PM-8:30PM  
MUSEUM OF DISCOVERY & SCIENCE

**CLOSING RECEPTION**

\* Design + Research Project Presentation



## FLORIDA ATLANTIC UNIVERSITY

FAU's School of Architecture boasts an internationally diverse faculty and student body addressing the global challenges of architecture through interdisciplinary collaboration.

**Sea Level Rise Summit 2013** | Resilience in the Face of Change | Fort Lauderdale | October 16-17

**2013 ACSA Fall | Subtropical Cities Conference**  
Braving a New World | Design Interventions for Changing Climates | Fort Lauderdale | October 18-19

**Sea Level Rise + Fort Lauderdale** | Hypothesizing Future Built Environments | Exhibition at MetroLAB Fort Lauderdale | October 16-24

[www.fau.edu/arch](http://www.fau.edu/arch)

## MAKING WAVES IN ARCHITECTURE

*The School of Architecture offers a Bachelor of Architecture degree program accredited by the National Architectural Accreditation Board.*



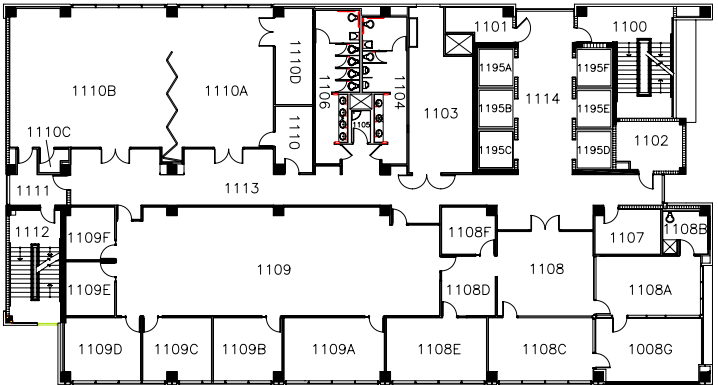
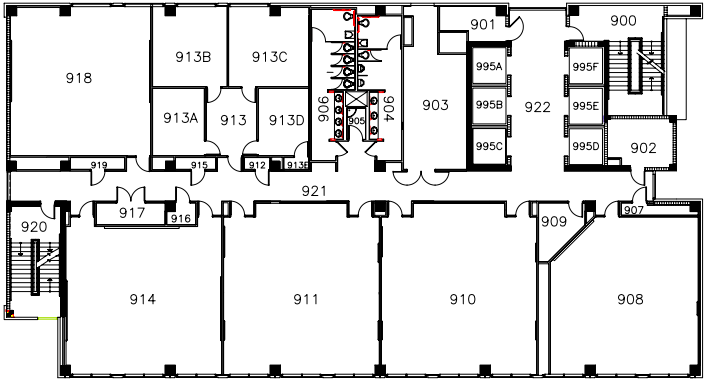
### SUBMIT TO THE CALL FOR PROJECTS

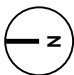
ACSA invites project submissions under the following 8 thematic session topics + additional open sessions. **[deadline: November 13, 2013]**

- Architecture in an Expanded Field, from Interiors to Landscapes
- Building Behaviors
- Design Research in the Studio Context
- History/Theory
- Housing
- Materials
- Media Investigations
- Urbanism

+ more info @ [www.acsa-arch.org/conferences](http://www.acsa-arch.org/conferences)

FLORIDA ATLANTIC UNIVERSITY  
BROWARD COLLEGE HIGHER EDUCATION COMPLEX  
FLOORPLAN





# Event Map

**Key**

..... Suggested Routes

■ Event Areas

**Destinations**

- ① FAU/BC Higher Education Complex
- ② Askew Tower/ MetroLAB
- ③ Riverside Hotel
- ④ The EventCenter (First Baptist Church)
- ⑤ Velocity Center (First Baptist Church)
- ⑥ Museum of Discovery & Science

